

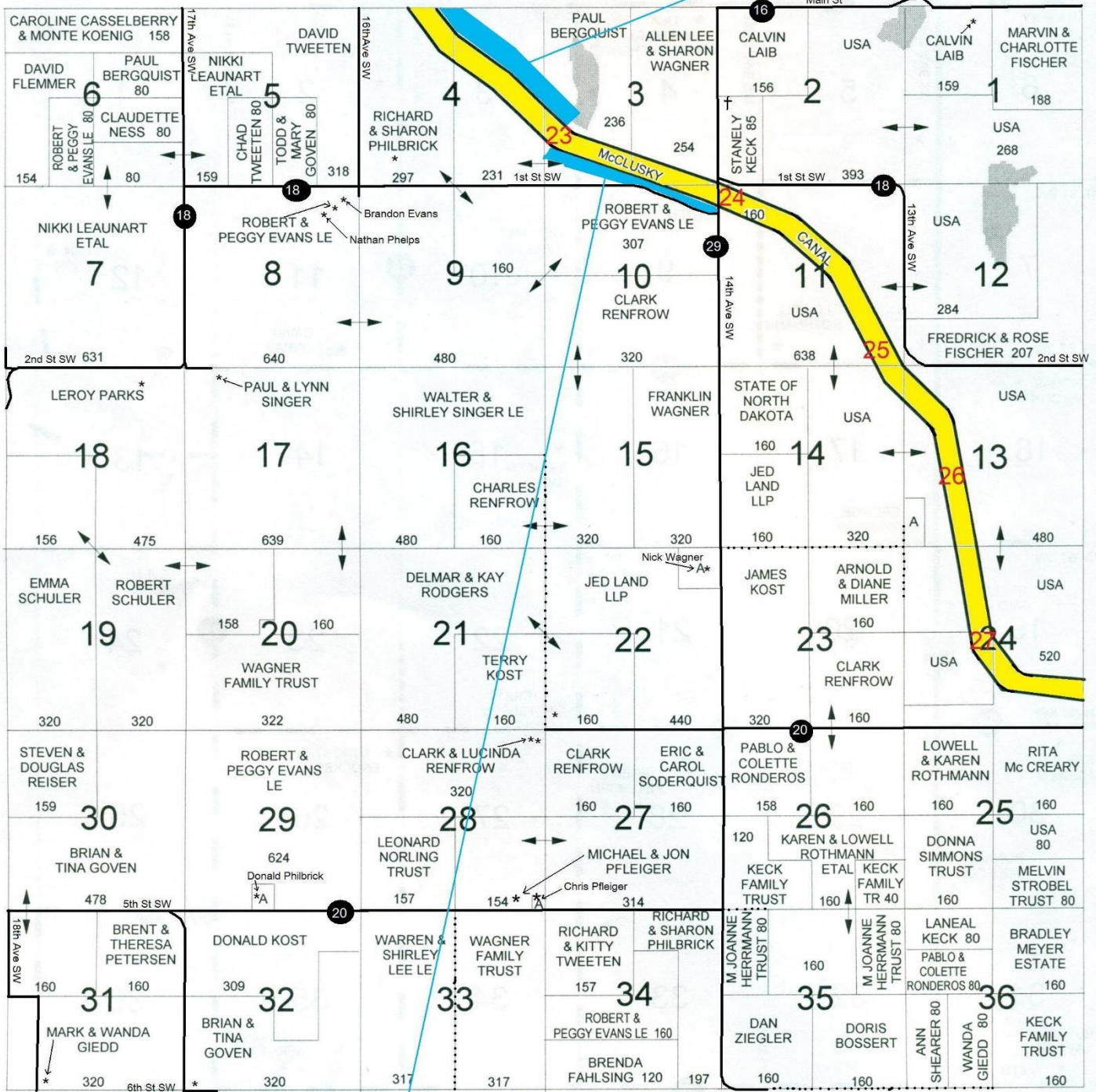
TWP 145N - R80W PLAT

MC 22L = 53 /A

T-145-N

CODE: CI

R-80-W



ET

CMS

MC 23R = 33 /A

MC 29L = 40 / A

TWP 145N - R79W PLAT

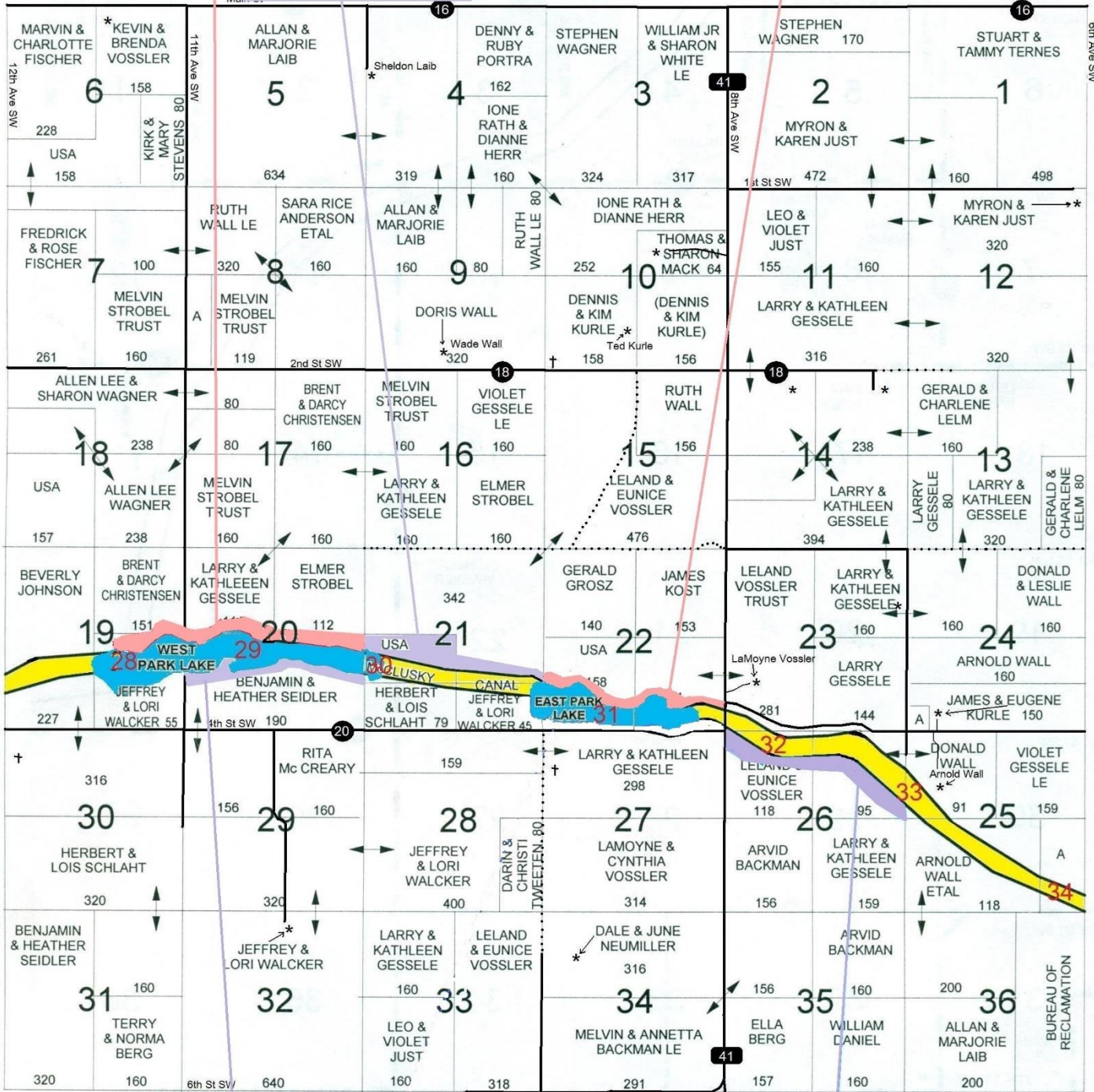
MC 31L = 69/A

T-145-N

MC 30L = 55 / A

CODE: CJ

R-79-W



MC 29R = 36 / A

MC 32R = 38 / A

ET

CMS